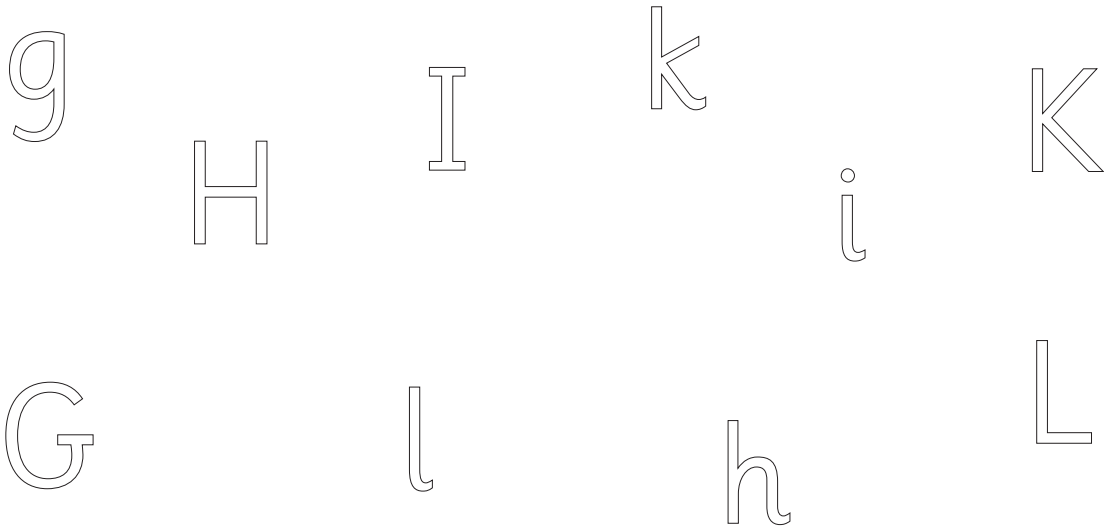


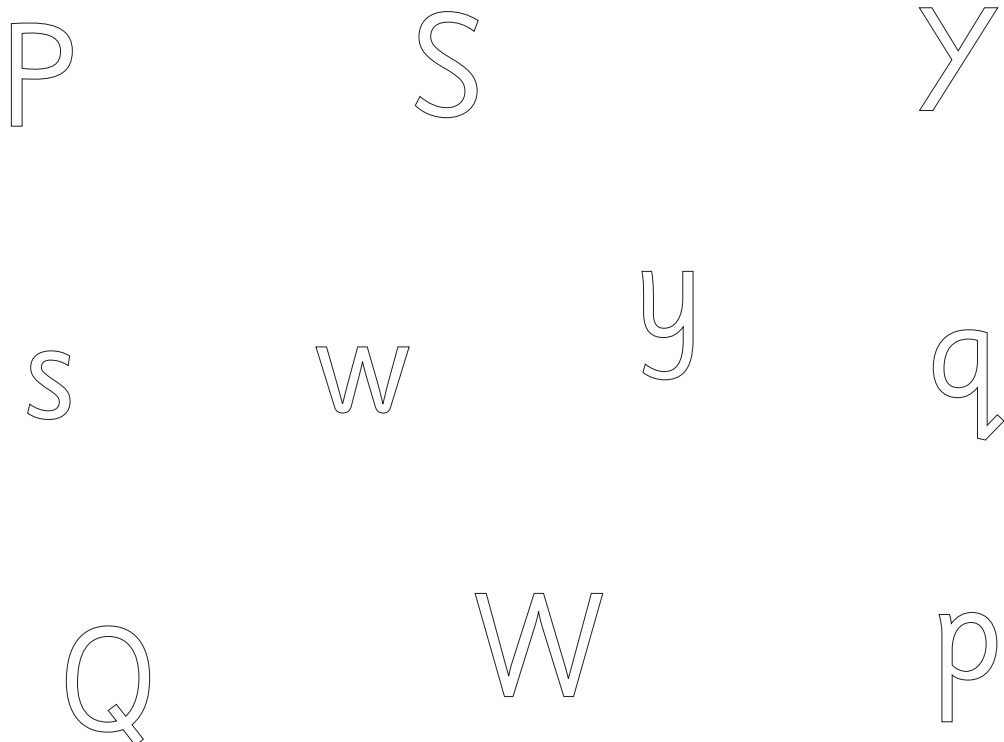
Lowercase letters and Capitals



Draw a line connecting the letters that make the same sound.



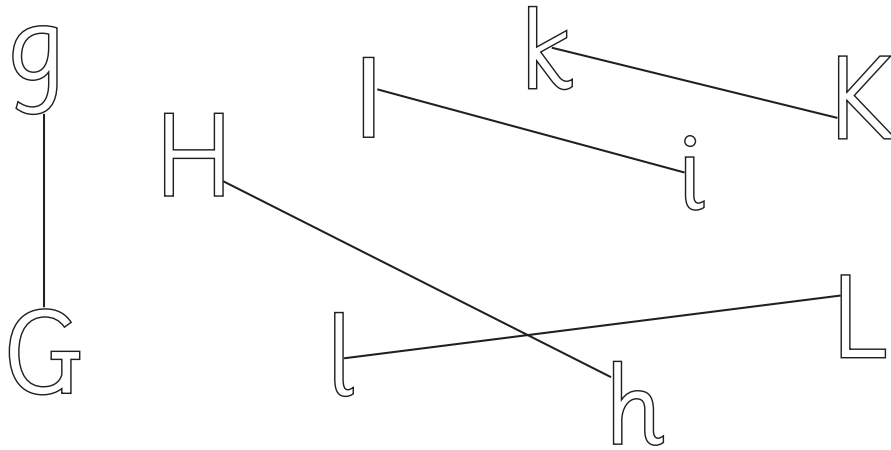
Draw a line connecting the letters that make the same sound.



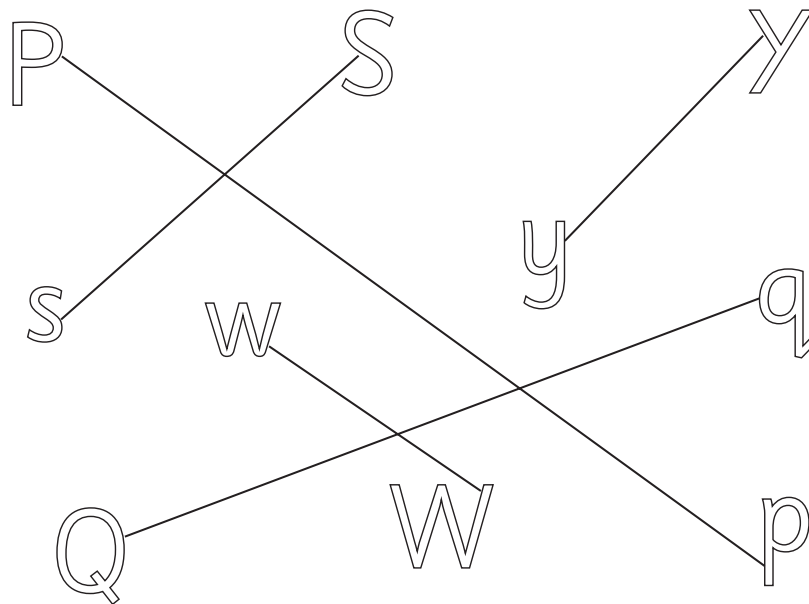
Lowercase letters and Capitals



Draw a line connecting the letters that make the same sound.



Draw a line connecting the letters that make the same sound.



In this activity, encourage the child to match up the letter pairs and practice letter recognition of both lowercase letters and their capitals. These letter pairs don't always look the same, but they do make the same sound. Say together the sound that each letter makes, and then ask your child to draw a line between each lowercase letter and its capital letter.